

RECOM™

Pre-stained Protein Markers

UNSTAINED Range

■ **Cat.No.REC 007**
RECOM™ UNSTAINED Wide Range

■ **Cat.No.REC 008**
RECOM™ UNSTAINED Ruler

Store at
-20°C

25-50 Lanes per Marker (250 µl)

Applications

- Recombinant
- Unstained for versatile usage
- Stepped 5-10 µl increments
- Accurate and Broad Size Range
- Highlighted Bands for increased discrimination
- Ladder Banding
- Ruler Banding

RBC
It's the Joy of Discovery

Real Biotech Corporation

Real Biotech Corp. is a leading R&D based life science solutions provider.
For more information on our extensive and innovative life science range please visit our web site.

Introduction

REC007: UNSTAINED Wide Range

RECOM™ UNSTAINED Wide Range size marker is suitable as reference banding for proteins between 7 kDa to 240 kDa. It is a true size marker containing 10 recombinant purified proteins whose molecular weights are well-adjusted. UNSTAINED Wide Range protein ruler marker is available in a ready-to-use formula (no need to boil before use), and is suitable for sizing proteins between 7 kDa and 240 kDa by SDS-PAGE. For easy identification, the 25kDa and 75kDa bands have been double concentrated.

REC008: UNSTAINED Ruler

5-10 kDa size increments (7-240 kDa, easy size estimation)
Highly purified and blended 8 recombinant proteins

Real Biotech's UNSTAINED Ruler marker is a true size marker containing 17 recombinant purified proteins whose molecular weights are well-adjusted. UNSTAINED Wide Range protein ruler marker is available in a ready-to-use formula (no need to boil before use), and is suitable for sizing proteins between 7 kDa and 240 kDa by SDS-PAGE. For easier identification of bands, 25kDa, 50kDa, and 100kDa bands have been double concentrated. UNSTAINED Wide Range protein ruler marker is useful for determining exact band size (maker function), for easy to remember band sizes (ladder function), and for better discrimination of band locations (ruler function).

Recommended loading volume

5-10 µl/lane for a mini-gel (10x8cm², 0.75mm or 1mm thick).
10-15 µl/lane for a large-gel (30x20cm², 1mm or 1.5mm thick).

Recommended storage condition

-20°C for one year.
Please aliquot in a small volume for prevention of repeated freezing & thawing.

Caution

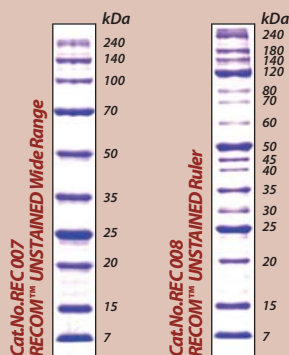
Repeated freezing & thawing, long-term storage and re-use of pipette tip may degrade proteins rapidly. These markers are provided as a ready to load format, meaning that there is no need to boil before use. If visible precipitation of SDS occurs following long-term storage at -20°C precipitant may be dissolved by a short heating step at 50-80°C for a few minutes.

RECOM™

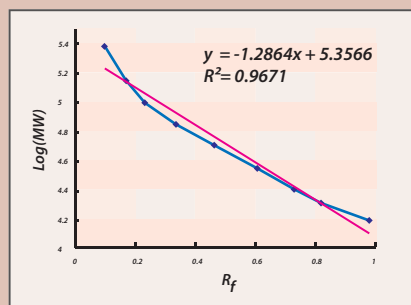
Pre-stained Protein Markers

UNSTAINED Range

UNSTAINED Range Markers

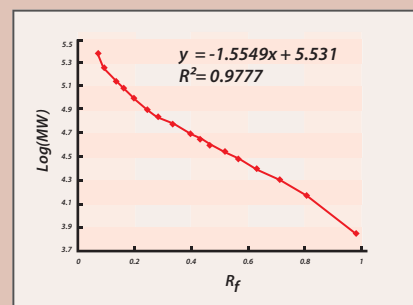


Cat.No.REC 007 RECOM™ UNSTAINED Wide Range



Standard curves are generated by plotting log molecular weight (MW) versus migration distance (R_f) of each band in RECOM™ through a 10% gradient gel.

Cat.No.REC 008 RECOM™ UNSTAINED Ruler



Standard curves are generated by plotting log molecular weight (MW) versus migration distance (R_f) of each band through a 10% gradient gel.